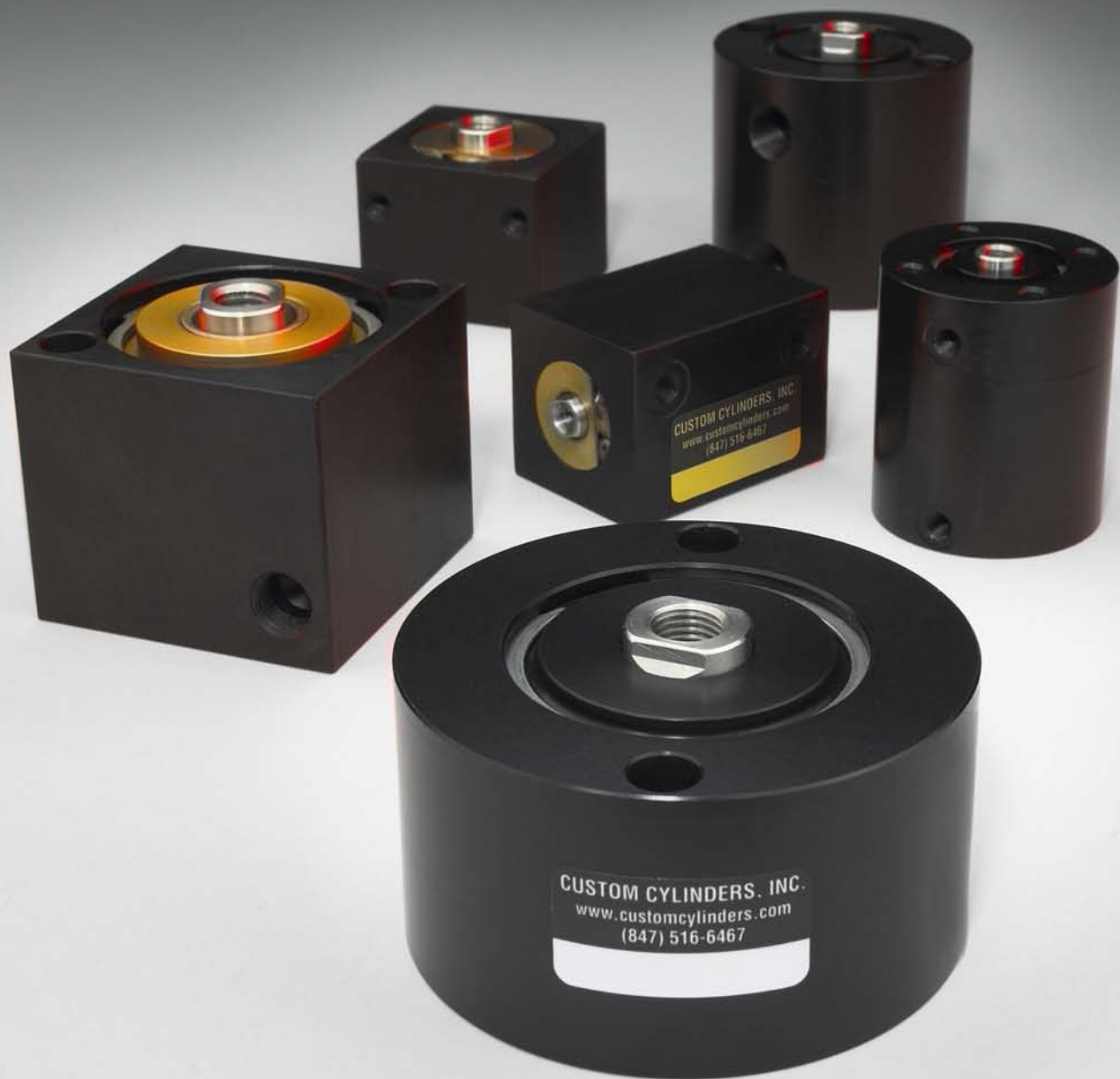


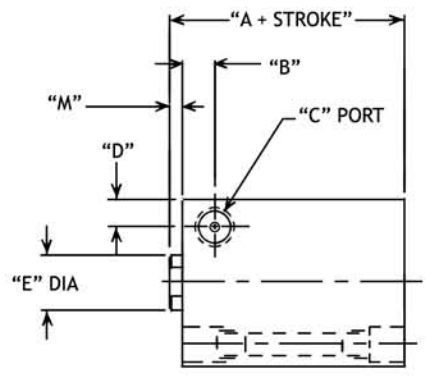
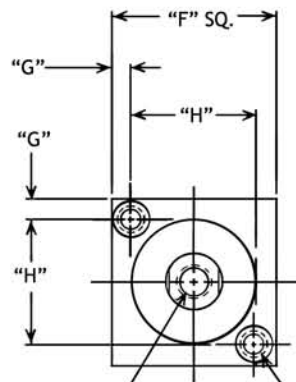
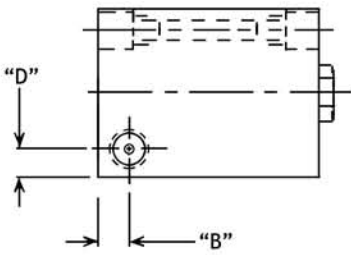
# MIGHTY TIKE CYLINDERS



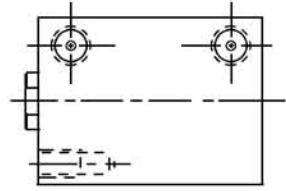
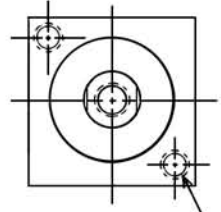
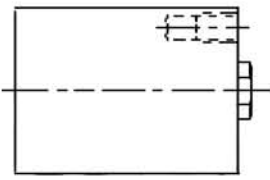
Custom Cylinders, Inc.

**MTG SERIES  
STYLE "S"**

( THRU 3/4" STROKE )



( OVER 3/4" STROKE )



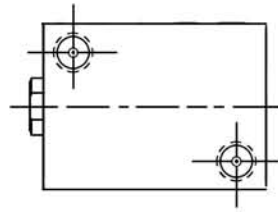
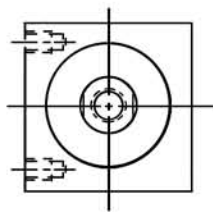
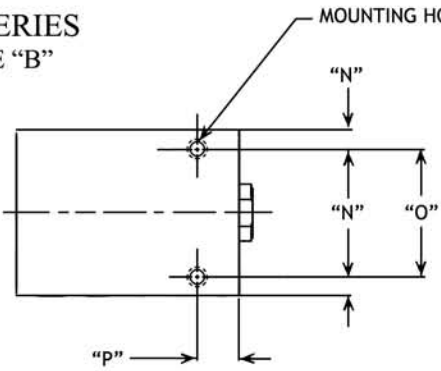
MOUNTING HOLES TAPPED FOR "L" SCREW THRU MOUNT FOR "K" SOCKET HEAD SCREW 4 PLACES, 2 PER END

MOUNTING HOLES TAPPED FOR "L" SCREW 2 PLACES, THIS END

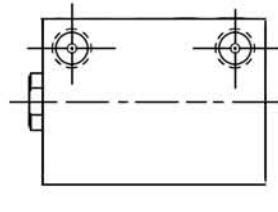
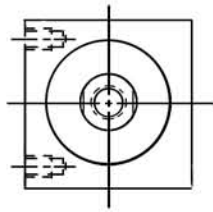
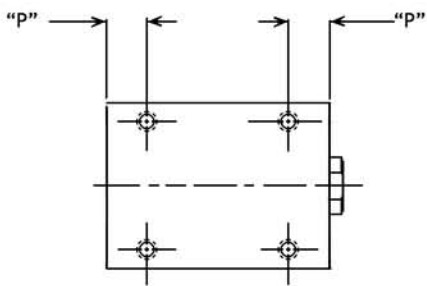
BORE	A	B	C	D	E	F	G	H	J	K	L	M	N	O	P	Q
3/4	13/16	9/32	10-32	5/16	5/16	1-1/4	3/16	7/8	10-24	#10	1/4-20	1/16	3/16	7/8	3/8	#10-24
1-1/8	7/8	9/32	1/8 NPT	1/4	1/2	1-1/2	3/16	1-1/8	5/16-18	#10	1/4-20	1/8	3/16	1-1/8	3/8	#10-24
1-3/8	1-1/8	13/32	1/8 NPT	5/16	5/8	1-3/4	7/32	1-5/16	3/8-16	#10	1/4-20	1/8	1/4	1-1/4	1/2	#10-24
1-5/8	1-1/8	13/32	1/8 NPT	5/16	5/8	2	1/4	1-1/2	3/8-16	#10	1/4-20	1/8	1/4	1-1/2	1/2	1/4-20

**MTG SERIES  
STYLE "B"**

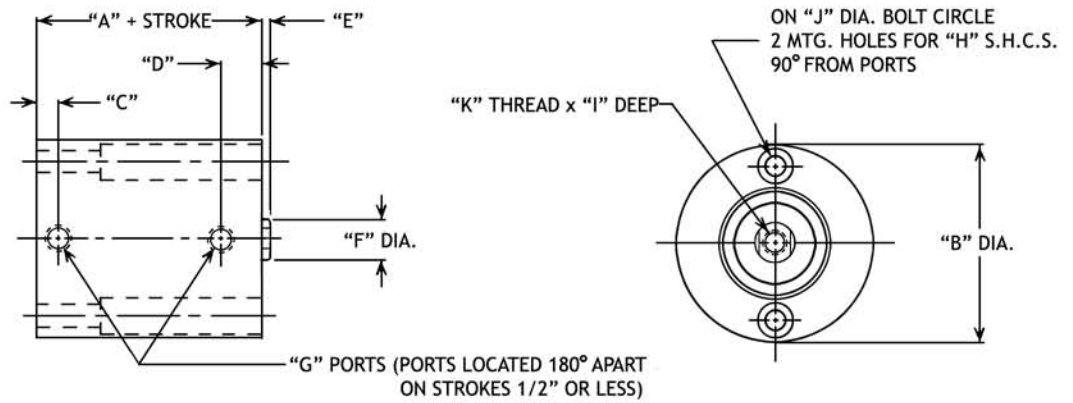
( THRU 3/4" STROKE )



( OVER 3/4" STROKE )



**MT SERIES  
STYLE "F" SHOWN**

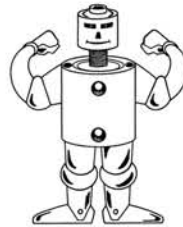


BORE	A			B	C	D	E	F	G	H	I	J	K	APPROXIMATE FORCE
	DA	SR	SE											
3/4	3/4	1*	1 1/8*	1 17/32	11/64	5/16	1/16	5/16	10-32	#8 **	5/16	1 3/6	10-32	0.4 x (P.S.I.)
1 1/8	7/8	1*	1 1/8 *	2 1/16	9/32	15/32	1/8	1/2	1/8 NPT	#10	3/8	1 11/16	5/16-24	1.0 x (P.S.I.)
1 5/8	1	1 1/4	1 1/2	2 13/16	9/32	1/2	1/8	5/8	1/8 NPT	#10	1/2	2 3/8	3/8-24	2.0 x (P.S.I.)
2	1 1/8	1 3/8	1 5/8	3 5/16	9/32	1/2	1/8	3/4	1/8 NPT	1/4	5/8	2 13/16	1/2-20	3.1 x (P.S.I.)

\* 1/2" STROKE MAX.

\*\* ON BODIES 1 3/4" LONG AND OVER, THRU HOLES REPLACED WITH (4) 8-32 x 7/16" DEEP TAPPED HOLES

SPRING SPECIFICATIONS		
BORE	MAX. FORCE	RATE
3/4	6 LBS.	7 LBS./INCH
1-1/8	6 LBS.	6 LBS./INCH
1-5/8	11 LBS.	6 LBS./INCH
2	13 LBS.	3 LBS./INCH



BORE	MALE ROD END
3/4	10-32 x 3/8 LONG
1-1/8	5/16-24 x 5/8 LONG
1-5/8	3/8-24 x 3/4 LONG
2	1/2-20 x 1 LONG

**ORDERING INSTRUCTIONS**

MODEL	BORE	STROKE	ACTION	MOUNT
MT	075 = 3/4 112 = 1 1/8 162 = 1 5/8 200 = 2	04 = 1/4	DA = DOUBLE ACTING SR = SPRING RETURN SE = SPRING EXTEND	F = COUNTERBORED FROM ROD END R = COUNTERBORED FROM BLIND END
		08 = 1/2		
		12 = 3/4		
		16 = 1		
		24 = 1 1/2		
		32 = 2		

MODEL	BORE	STROKE	ACTION	MOUNT
MTG	075 = 3/4 112 = 1 1/8 137 = 1 3/8 162 = 1 5/8	04 = 1/4	DA = DOUBLE ACTING	S = SQUARE END MOUNT B = BASE MOUNT
		08 = 1/2		
		12 = 3/4		
		16 = 1		
		24 = 1 1/2		
		32 = 2		

**WARRANTY**

CUSTOM CYLINDERS, INC. warrants its products to be free from defects in material and workmanship. Liability under this Warranty is limited to allowance for credit or replacement of defective parts and is at the option of Custom Cylinders, Inc.

Mis-application or mis-use are necessarily excluded from this warranty. Custom Cylinders, Inc. makes no other guarantees, either expressed or implied. Custom Cylinders, Inc. reserved the right to change material specifications or product design at any time, without notice and without incurring any obligations.

**Our Specialty is Custom Cylinder and Custom Valve designs from a slight modification to 100% Custom**



**Custom Cylinders, Inc**  
  
**www.customcylinders.com**

700 Industrial Drive Unit I Cary Illinois 60013 (847)516-6467 Fax (847)516-6470